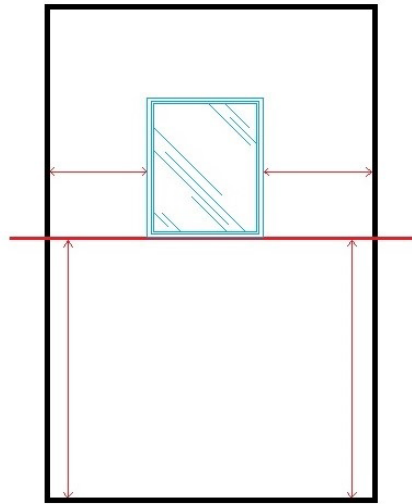


IWS Cast-In-Place Window Installation Instructions

1. Identify your panel layout: Top, Bottom, Outside, and Inside.
2. Measure up from the bottom of the wall panel on both sides to locate the bottom of the chamfer line.
3. Mark a horizontal Line for the window chamfer. (See illustration B, Below)
4. Measure over from the sides of the wall form-boards to center the window unit.
5. Once the reference points for the window are complete, simply add a spray-on adhesive to the downward face of the window form.
6. Place the window onto the alignment marks, minding the labeled top and bottom of the window.



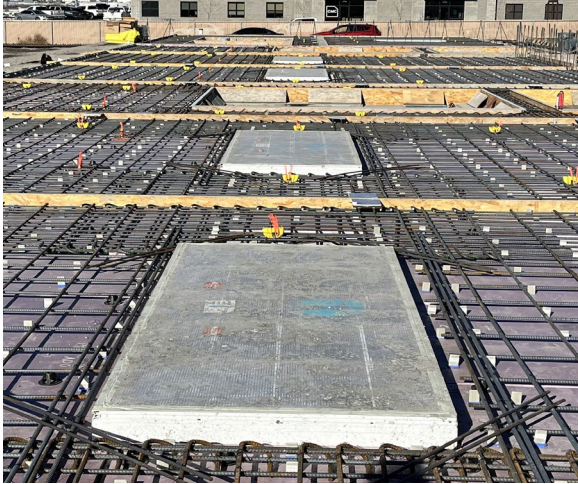
B



7. At this point, you may adhere any additional decorative chamfers or cosmetic form liners. They may be terminated against the window chamfers to create a seamless look with minimal reworking after the walls are tilted.



8. Once your windows and chamfers are glued in place, you may continue with spraying your releasing agent, rebar installation and concrete placement.
9. Make note to vibrate around windows for elimination of air gaps, and hand-feather finish up to window, avoiding ride-on power-troweling to reduce the chance of frame damage.



10. You may remove the inner wall forms before tilting. When tilting the panel, the previously glued-down outer window forms should remain on the slab. If the forms do not come out, remove them to prevent a potential falling hazard.
11. IWS windows are built with a protective plastic coating installed on both sides of the window, which serves two purposes; it helps protect the frame, paint and glass from construction debris, and it is designed to serve as masking material for painters and concrete coatings. It should be removed by the painters after coatings are applied.
12. The process of installing IWS Cast-In Place Windows is complete. No exterior caulking or finishing work is required.

For any further questions, employee training, or to schedule field assistance on your first application, don't hesitate to contact IWS today at: 1-800-613-8148.