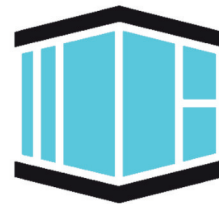


**PATENTED  
PROCESS**



**INTEGRATED  
WINDOW SYSTEMS™**

# CAST-IN-PLACE WINDOW SYSTEM

## **THE NEW STANDARD IN TILT-UP CONSTRUCTION**

Integrated Window Systems® is revolutionizing the tilt-up construction industry with our innovative installation system designed to eliminate costs, reduce construction time, and reduce labor associated with clerestory punch windows.

### **Commercial-grade uPVC creates more rigid, durable, and stronger windows**

- Built-in thermal performance & energy efficient
- Rated at 225 MPH winds, Cat 5 Hurricanes and Tornadoes
- Water infiltration resistance is 33% higher than current industry options
- Meets and exceeds architectural and structural requirements
- Corrosion resistance

### **PRE-ASSEMBLED SYSTEM**



**Concrete formwork already integrated.**



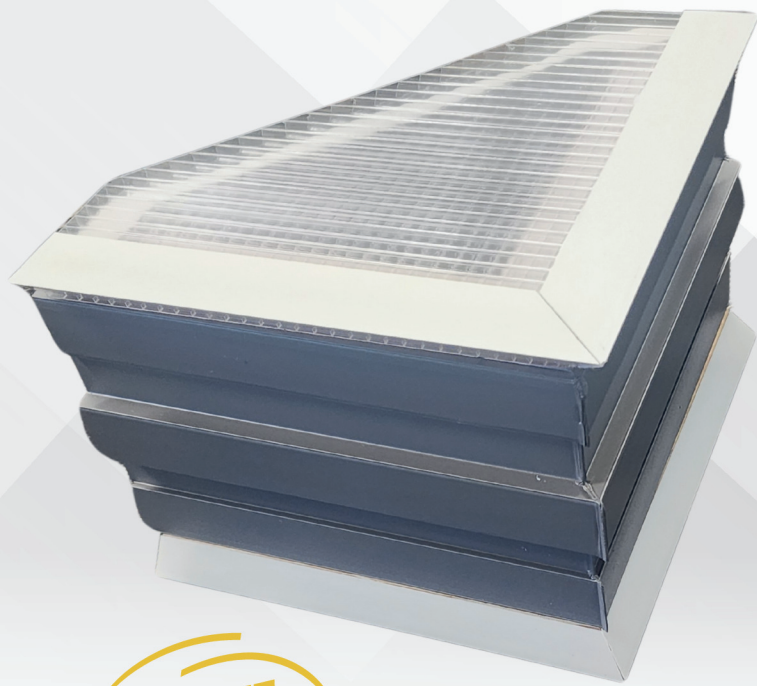
**Cast-in-place including the glass**

### **COST-SAVING INNOVATION**

- Eliminates extra material, forming, and bracing
- Reduces alignment issues, stripping, and waste
- Cuts labor time and complexity
- No exterior caulking needed

**WWW.IWSTILT.COM**

# CONCRETE CHAMFER



Our Concrete Chamfer comes pre-assembled with formwork. Designed to align precisely with existing reveal rustication strips, this chamfer creates a clean, unified look that seamlessly blends the window frame reveals with the overall building facade.

## Key Features:

- Delivered on site in formwork, ready to install
- Window glass pre-installed
- Works with existing reveal rustication strips

**PATENT**  
**11,834,823**

## PANEL WIDTHS

Varying panel widths can be accommodated by the exclusive modular design for each IWS series window within standard product offering.

## STANDARD SIZES

IWS series comes in 5 standard offerings: 4x4, 5x5, 6x4, 8x4, 6x6.

\*Custom sizes available upon request.

## COLOR CHOICES

Custom color options available upon request.



## INSULATED GLAZING CHOICES

Clear, Low E Argon Filled Standard 1 inch outside IG unit (custom order options: Obscure Glass, Tempered Glass, Tinted Glass, Ultra Performance Glass, Grids)

We can meet your glass requirements, both functional and aesthetic.





# TILT SERIES FEATURES & HIGHLIGHTS



**INTEGRATED  
WINDOW SYSTEMS™**

**PATENTED  
PROCESS**

## **WINDOW FEATURES & HIGHLIGHTS**

- Interior Glazing Bead
- Custom Paint Available
- Built-In Drip Edge
- Superior Tensile Strength
- Modular Design
- Exterior sill sloped at 2 degrees
- Tested to up to a 225mph wind speed and 130 psf design pressure
- Welded Frames
- *Cast-In Place, including glass*
- *Pre-assembled formwork included*
- *Eliminates exterior caulking to prevent leaks and costly reapplications in the future*
- *Lifetime maintenance free*
- Utilization of multi-chambered profiles in design
- Exterior temperatures & Interior temperatures never come in direct contact
- Windows outperform aluminum and steel in efficiency testing
- Natural thermal barrier without the added cost of a “thermal break”
- Corrosion Resistant to all weather and climate conditions

## **TRANSFORM YOUR PROJECT WITH IWS**

 **800-613-8148**  
 **info@iwstilt.com**  
 **www.iwstilt.com**



## **WINDOW SOLUTIONS FOR THE TILT-UP CONCRETE INDUSTRY**

IWS values our technology and is fully dedicated to the protection and enforcement of its intellectual property rights. In addition to patent 11,834,823, IWS has several other pending patents relating to the above-described technology. IWS utilizes patents, trademarks, copyrights, and trade secrets to safeguard our innovative creations, and are committed to monitoring the use of our technology and prompt enforcement against infringement to defend our intellectual property assets.



# PROJECT PORTFOLIO

## LAREDO, TEXAS



## ROCHESTER, NEW YORK



## LINCOLN, NEBRASKA



## SALT LAKE CITY, UTAH

